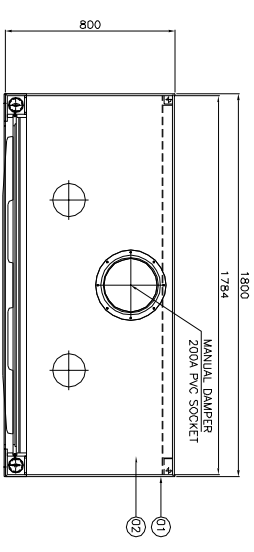
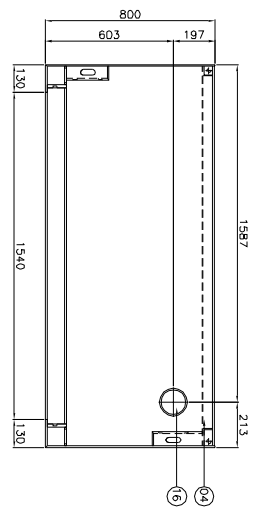
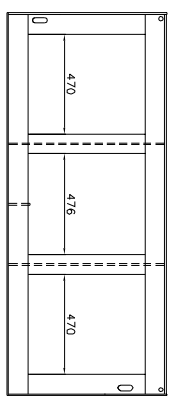


TOLERANCE	0.xxx	0.0005
0.xx	±0.02	±0.05
0.x	±0.05	±0.1
0	±0.1	

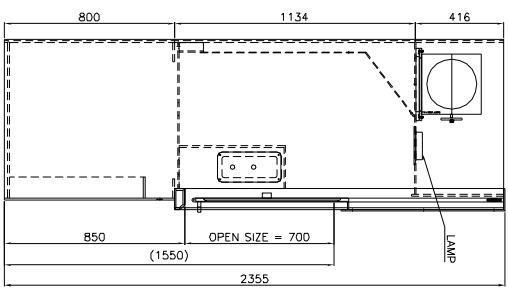
PVC FUME HOOD BODY ASSY

NOTE:
 1. BODY MATERIAL : MORY PVC 8T.
 2. SIZE : 1800 X 800 X 2350H

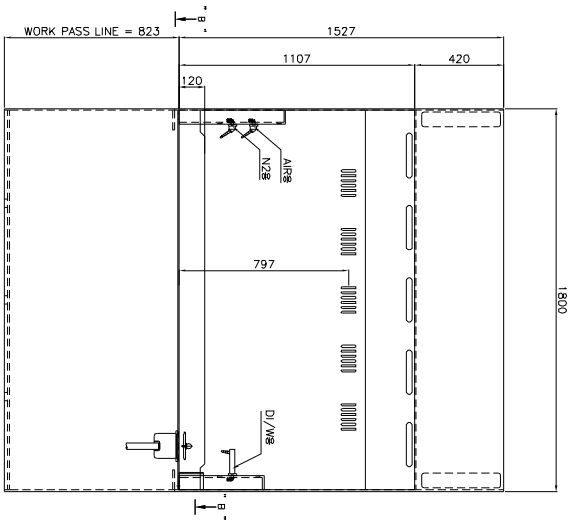
NO	DESCRIPTION	MATERIAL	QUANTITY	CHARACTER	REMARK	NO	DESCRIPTION	MATERIAL	QUANTITY	CHARACTER	REMARK
09	LIGHT (LED)	/	1 SET	60Hz · 15w		B00	PVC FUME HOOD BODY ASS'Y	PVC	1 SET	/	MORY PVC
10	CABINET DOOR	PP PLATE 8T	2 SET	/	WHITE COLOR	01	EXTERIOR WALL	PVC PLATE 8T	1 SET	/	MORY COLOR
11	CABINET	PP PLATE 8T	1 SET	/	WHITE COLOR	02	INTERIOR WALL	PVC PLATE 5T	1 SET	/	MORY COLOR
12	SWITCH (SELECT TYPE)	/	2 EA	220V	LIGHT, FAN	03	BATFLE	PVC PLATE 5T	1 SET	/	MORY COLOR
13	MANUAL VALVE (N2 8)	Cu	1 SET	15A	GREEN	04	WORK PLATE	PVC PLATE 8T	1 SET	/	MORY COLOR
14	MANUAL VALVE (AIR 8)	Cu	1 SET	15A	YELLOW	05	DOOR WINDOW	PVC PLATE 5T	1 SET	/	CLEAR
15	MANUAL VALVE (D/W 8)	Cu	1 SET	15A	BLUE	06	DOOR FRAME	PVC PLATE 15T	1 SET	/	MORY COLOR
16	POWER SINK	PVC	1 SET	φ100		07	EXHAUST DUCT	PVC SOCKET 200A	1 SET	/	/
						08	RECEPIPLATE (200X110H 8822)	/	2 SET		200X110H 8822



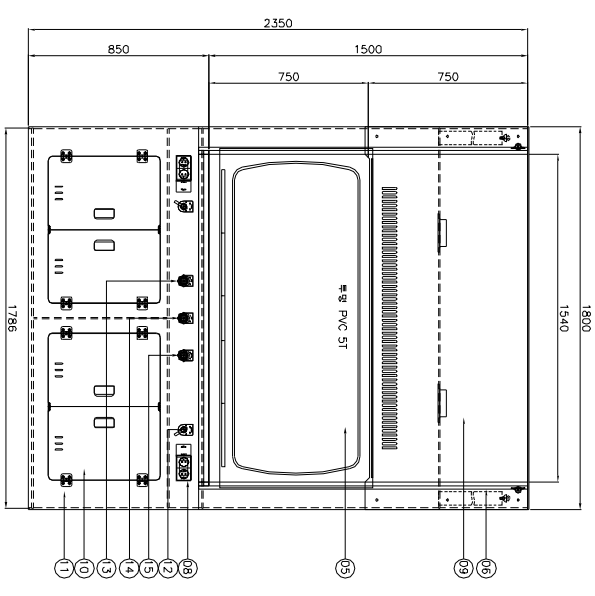
" TOP VIEW "



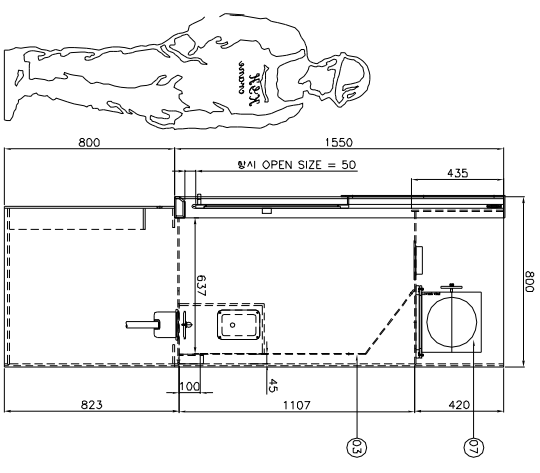
" LEFT VIEW "



" SECTION A-A VIEW "



" FRONT VIEW "



" RIGHT VIEW "

	▽	▽▽	▽▽▽	▽▽▽▽	▽▽▽▽▽
71. 差					
Ro	12.5 ~ 25φ	3.2 ~ 6.3φ	0.4 ~ 0.8φ	0.1 ~ 0.2φ	
Rmax	50 ~ 100S	12.5 ~ 25S	1.6 ~ 3.2S	0.4 ~ 0.8S	

SURFACE FINISH

DRAWN	DESIGN	CHECK	APPROV	SCALE	UNIT	CUSTOMER
KIM	GYU HO			N/S	mm	P1703038
EQUIPMENT						PVC FUME HOOD
DWG NO.						2017. 03. 28