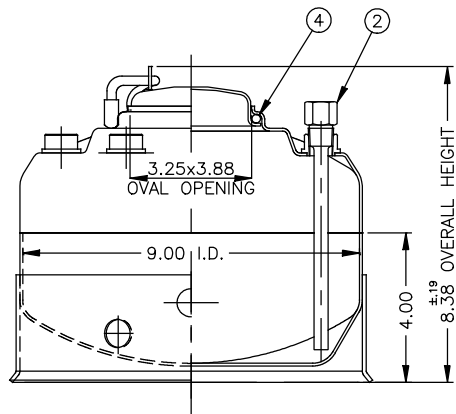
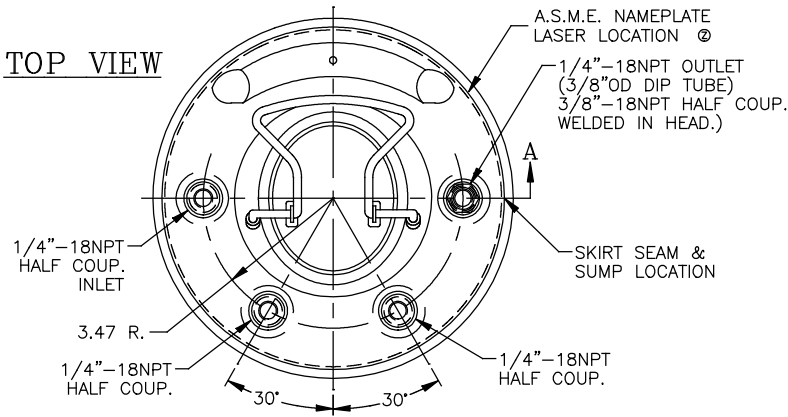
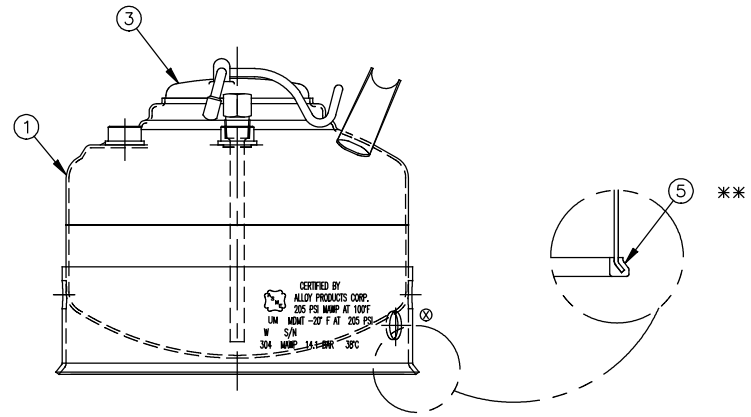


REVISION
A7-15-85
C/O 8500
B1-16-88
C/O 8845
C3-28-90
C/O 9882
D10-30-90
C/O 10105
E1-28-92
C/O 10700
F05-28-93
C/O 10105
G11-02-95
C/O 12087
H04-23-96
C/O 12161
I07-29-96
C/O 12322
J5-4-98
C/O 13006
K5-4-98
C/O 12677
L5-4-98
C/O 12743
M6-06-2000
C/O 13280
N6-06-2000
C/O 13332
O6-06-2000
C/O 13710
P6-06-2000
C/O 13461
Q7-10-2001
C/O 14101
R8-28-2006
C/O 15555
S10-24-2006
C/O 15614
T3-25-2008
C/O 15884
U8-21-2008
C/O 15938
V10-10-2008
C/O 15992
W2-8-2010
C/O 16194
X1-10-2013
C/O 16694
Y6-04-2013
C/O 16771
Z1-24-2018
C/O 17692

TOP VIEW



SECTION "A"



ITEM	DWG./PART NO.	MATERIAL	QTY.
1	C208-0305-00	SOC 9" TANK WELDMNT	304 1
2	A206-4414-00	DIP TUBE ASSEMBLY	304 1
3	C506-0491-00	CLOSURE LID ASSEMBLY	304 1
* 4	A100-0100-00	CLOSURE SEAL O-RING	E.P.D.M.
	A100-0161-00		VITON
	A100-0361-00		T.E.V.
** 5	A109-0003-00	RUBBER BOOT	EPDM 1

\* SEE CURRENT SHOP ORDER FOR O-RING TYPE TO BE USED.

\*\* ITEM 5 IS OPTIONAL. INSTALL ONTO SKIRT WHEN P/N B501-0865-00-X-R IS ORDERED. (X BEING O-RING CHOICE E, F, DR V).

MATERIAL NOTES:

MATERIAL TO BE TYPE 304/316 STAINLESS STEEL. SHEET/PLATE STOCK PER A.S.M.E. SPEC. SA-240. BAR STOCK PER A.S.M.E. SPEC. SA-479. WROUGHT/FORGED STOCK PER A.S.M.E. SPEC. SA-182. WELDED OR SEAMLESS PIPE PER A.S.M.E. SPEC. SA-312. TUBING PER A.S.M.E. SPEC. SA-249.

NOTES:

- CONSTRUCTION MEETS LATEST A.S.M.E. "UM" CODE & ADDENDA.
- ALL WELDS TO BE GTAW (OR) AND GMAW.
- MAXIMUM WORKING PRESSURE: 205 P.S.I.G. @ 100°F.
- HYDROSTATIC TEST: 308 P.S.I.G.
- TANK WILL NOT BE FULLY DRAINABLE WITH THIS OUTLET DESIGN.
- FINISH: WHITE PICKLE. WELDS ARE AS WELDED.

BT-15	BT-1	NOTICE THIS DRAWING AND THE DATA SHOWN ARE PROPRIETARY INFORMATION AND SHALL NOT BE USED WITHOUT APPROVAL OF ALLOY PRODUCTS CORP.	DWG. UNITS ARE IN INCHES UNLESS OTHERWISE SPEC'D.	DRAWN JSB	DATE REDRAWN 2-8-2010	9" I.D. TANK ASSEMBLY 1 GALLON A.S.M.E.	304
			TOLEARNICES .XX DECIMALS ±.030 .XXX DECIMALS ±.015 ANGLES ±1'	APPR'D RW	PLT'D SCALE 1/5		
ALLOY PRODUCTS CORP WAUKESHA, WISCONSIN						DWG. NO. B501-0865-00	