

## CTFE Spatula CTFE 테프론 사각 주걱

Cat. No.	Model	길이	Spatula	EA Price ₩
S16-64-062	F5033-05	160 mm	w50×L40 mm	346,300
S16-64-066	F5033-06		w70×L50 mm	395,400
S16-64-070	F5033-07	170 mm	w90×L60 mm	444,700
S16-64-074	F5033-08	185 mm	w120×L85 mm	617,800

- 재질 : CTFE Spatula, PTFE Handle
- Flon Industry



## CTFE Spatula CTFE 테프론 원형 주걱

Cat. No.	Model	길이	Spatula	EA Price ₩
S16-64-182	F5034-05	150 mm	w75×L45 mm	371,700
S16-64-186	F5034-06	170 mm	w100×L55 mm	444,700
S16-64-190	F5034-07	190 mm	w125×L75 mm	493,900
S16-64-194	F5034-08		w150×L85 mm	641,600

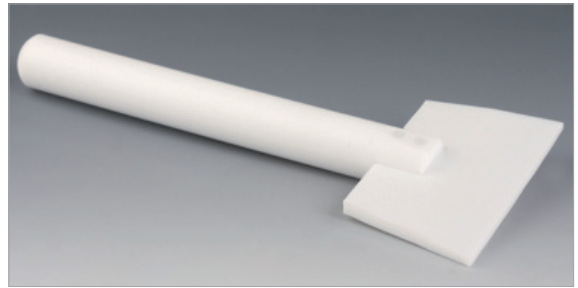
- 재질 : CTFE Spatula, PTFE Handle
- Flon Industry



## PTFE Scraper PTFE 스크래퍼

Cat. No.	Model	Size	Blade	EA Price ₩
S16-460-202	H916-02	∅20×L160 mm	w50 mm	298,300
S16-460-207	H916-06	∅20×L200 mm	w90 mm	635,300
S16-460-212	H916-08		w120 mm	685,800

- 재질 : PTFE, -200 ~ 250°C 내성
- BOLA



## Weighing Scoop, Spoon Shape 스푼형 평량 스킵

Cat. No.	Model	전체 길이	Scoop Size	EA Price ₩
S16-284-051	3702	105 mm	w12×L40 mm	4,500
S16-284-061	3408	200 mm	w25 mm	11,300

- 재질 : 18/10 Stainless Steel, Antimagnetic, Chemical-Resistant
- LK Labkorea



## Weighing Scoop 평량 스킵, Plastic Handle

Cat. No.	Model	전체 길이	Scoop Size	EA Price ₩
S16-284-041	3700	155 mm	w9 mm	7,500

- 재질 : Nickel Plated Brass
- LK Labkorea



## Weighing Scoop 평량용 스킵

Cat. No.	Model	전체 길이	폭	EA Price ₩
S16-102-441	12800	70 mm	32 mm	26,500
S16-102-448	12801	90 mm		27,300

- 재질 : 18/10 Stainless Steel, Antimagnetic, Chemical-Resistant
- LK Labkorea

