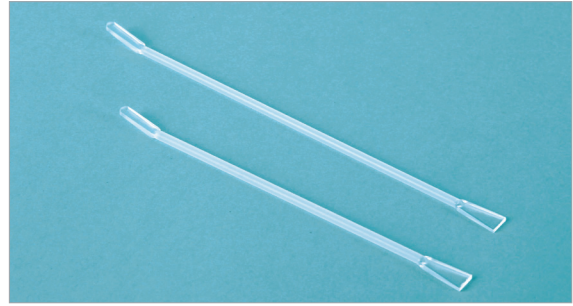


CTFE Micro Spatula CTFE 테프론 마이크로 스파츄라

Cat. No.	Model	길이	EA Price ₩
S16-64-025	F5015-01	150 mm	36,300
S16-64-031	F5015-02	180 mm	40,200
S16-64-037	F5015-03	210 mm	46,500
S16-64-043	F5015-04	240 mm	51,200

- 재질 : CTFE (Chlorotrifluoroethylene)
- Flon Industry



CTFE Spatula CTFE 테프론 스파츄라

Cat. No.	Model	길이	EA Price ₩
S16-64-116	F5016-02	150 mm	36,400
S16-64-121	F5016-03	180 mm	38,300
S16-64-126	F5016-04	200 mm	40,200

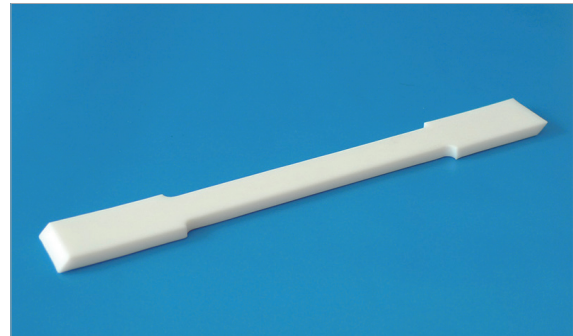
- 재질 : CTFE (Chlorotrifluoroethylene)
- Flon Industry



PTFE Double Spatula PTFE 양면 스파츄라

Cat. No.	Model	길이	Size	EA Price ₩
S16-450-301	043.120	120 mm	w12 mm	16,700
S16-450-303	043.150	150 mm	w18 mm	20,100
S16-450-305	043.180	180 mm	w20 mm	23,400
S16-450-307	043.210	210 mm	w25 mm	26,800
S16-450-309	043.240	240 mm	w30 mm	30,100

- 재질 : PTFE, -200 ~ 280°C 내열
- 불투명 PTFE 테프론 재질로 최상의 내화학성 가짐 • Cowie



Double Spoon 양면 스푼

- 재질 : 18/10 Stainless Steel, Antimagnetic, Chemical-Resistant
- LK Labkorea

고급형 양면 스푼

Cat. No.	Model	길이	Spoon 1	Spoon 2	EA Price ₩
S16-102-319	3352	150 mm	w17 mm	w25 mm	9,400
S16-102-326	3353	180 mm		w29 mm	9,800
S16-102-333	3354	210 mm	w22 mm	w29 mm	11,300
S16-102-340	3355	250 mm	w29 mm	w35 mm	12,400
S16-102-347	3356	300 mm		w35 mm	12,900

보급형 양면 스푼

Cat. No.	Model	길이	Spoon 1	Spoon 2	EA Price ₩
S16-139-781	1240-12	120 mm	w22 mm	w17 mm	5,400
S16-139-783	1240-15	150 mm		w22 mm	6,700
S16-139-785	1240-18	180 mm	w28 mm	w22 mm	7,500
S16-139-787	1240-21	210 mm		w28 mm	8,900
S16-139-789	1240-25	250 mm	w35 mm	w28 mm	10,500
S16-139-791	1240-30	300 mm		w35 mm	11,900



Analyzer Type Spoon Spatula 분석용 스푼 스파츄라

Cat. No.	Model	길이	Blade	Spoon	EA Price ₩
S16-139-647	1214-15	150 mm	w10 mm	w14 mm	3,300
S16-139-649	1214-18	180 mm			3,700
S16-139-651	1214-21	210 mm			4,500
S16-139-653	1214-23	235 mm			5,200

- 재질 : 18/10 Stainless Steel, Antimagnetic, Chemical-Resistant
- LK Labkorea

