

## PTFE GL Ball Valve PTFE 테프론 GL 스크류 볼 밸브

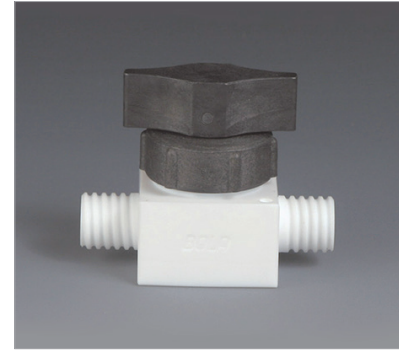
- 재질 : PTFE, PPS, -20 °C to 200 °C 내열
- 사용 조건 : Max. 12 bar(Pressure) or for Vacuum
- For Distributing Liquids or Gases
- 테프론 재질로 최상의 내화학성을 가짐
- BOLA

### 2-Way 일자형

Cat. No.	Model	Thread	Bore Dia	External Dimensions (L x D x H mm)	EA Price ₩
C20-460-581	E664-10	GL 14	∅ 3 mm	50 x 20 x 36mm	481,700
C20-460-585	E664-20	GL 18	∅ 4 mm	80 x 44 x 65mm	679,200
C20-460-589	E664-30	GL 25	∅ 8 mm	90 x 50 x 68mm	712,500
C20-460-593	E664-40	GL 32	∅ 12 mm	100 x 50 x 74mm	770,800

### 3-Way, L-Bore Shape

Cat. No.	Model	Thread	Bore Dia	External Dimensions (L x D x H mm)	EA Price ₩
C20-460-601	E667-10	GL 14	∅ 3 mm	50 x 20 x 52mm	718,200
C20-460-605	E667-20	GL 18	∅ 4 mm	80 x 40 x 90mm	694,000
C20-460-609	E667-30	GL 25	∅ 8 mm	90 x 50 x 98mm	843,000
C20-460-613	E667-40	GL 32	∅ 12 mm	100 x 50 x 106mm	1,188,400



## PTFE Pressure-Relief Valve With Manual Ventilation PTFE 테프론 압력 릴리프 밸브, 압력조절식

Cat. No.	Model	Thread	Bore dia	External Dimensions (L x D x H mm)	EA Price ₩
C20-460-701	E683-18	GL18	∅ 6mm	88 x 54 x 116mm	1,416,700

- 재질 : PTFE , PPS, -20 °C to 250°C 내열
- 압력 범위 : 0.1 to 10 abr (Factory setting 1.5 bar)
- Manual Vention by Pulling and Adjusting Screw with Center Nut
- 재질 : PTFE , -200 °C to 250°C 내열
- Conical, Bellied Shape, without Spout
- BOLA



## PTFE GL Control Valve PTFE 테프론 GL 스크류 컨트롤 밸브, for Constant Flow

Cat. No.	Model	Thread	Bore Dia	External Dimensions (L x D x H mm)	EA Price ₩
C20-460-681	E694-14	GL 14	∅ 4 mm	62 x 30 x 73mm	1,031,800
C20-460-685	E694-18	GL 18	∅ 6 mm	80 x 44 x 83mm	1,206,700

- 재질 : PTFE , PPS, -20 °C to 250°C 내열
- 압력 범위 : Max. 6 bar(Pressure) or Vacuum
- For Distributing Liquids or Gases
- Manual Regulation for Constant Flow
- Valve 상부의 Nipple은 내부 Opening의 정도를 표시함
- BOLA



- GL Screw 나사선용 Fitting은 123 Page 참조
- GL Screw Fitting은 286 ~ 287 Page 참조

