



Tubing Clamp, KECK® 튜빙 클램프

Cat. No.	Model	Tubing	색상	EA Price ₩
C09-53-009	KT4.5	up to Ø4.5 mm	Red	4,300
C09-53-018	KT6	up to Ø6.0 mm	Yellow	6,500
C09-53-027	KT10	up to Ø10 mm	Blue	6,700
C09-53-036	KT14	up to Ø14 mm	Red	7,000

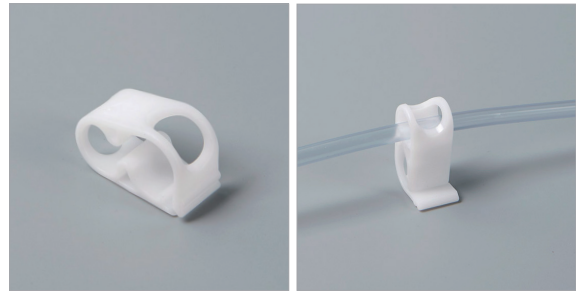
- 재질 : PBT, Polybutylene Terephthalate (205°C 내열)
- 유량을 조절할 수 있으며, 완전히 정지 시킬수도 있음
- od4.5 ~ 14 mm Flexible Tubing용
- DWK Lifescience



Squeeze-Fix Tubing Clamp 압박 튜빙 클램프

Cat. No.	Model	Tube Size	Length	EA Price ₩
C09-100-153	6076423	Ø1 ~ 5 mm	25 mm	12,700
C09-100-156	6201013	Ø3 ~ 10 mm	40 mm	32,500
C09-100-159	7300103	Ø6 ~ 15 mm	55 mm	49,600

- 재질 : POM, White 색상
- 살균이 가능한 위생적인 클램프
- 녹슬지 않고 탄력이 영구적임
- Wenk Labtech



Tubing Clamp 튜빙 클램프

Cat. No.	Model	Description	Size	EA Price ₩
C09-143-145	LCP-TU11	Mohr형 Pinch Cock ①	L60 mm	3,000
C09-143-150	LCP-TU22	Hoffman형 Screw Type ②		4,800

- 니켈 도금
- up to 12mm
- LK Labkorea



Tubing Clamp, Hoffman Hoffman형 튜빙 클램프

- 재질 : Nickel Plated Brass
- Usbeck

Standard

Cat. No.	Model	Tubing 두께	EA Price ₩
C09-284-140	5510	up to 12 mm	6,400
C09-284-150	5511	up to 17 mm	7,000
C09-284-160	5512	up to 20 mm	7,100
C09-284-170	5513	up to 25 mm	7,300
C09-284-180	5514	up to 30 mm	7,700
C09-284-190	5515	up to 40 mm	13,900
C09-284-200	5516	up to 50 mm	14,800

Heavy Pattern

Cat. No.	Model	Tubing 두께	EA Price ₩
C09-284-210	5520	up to 50 mm	36,600
C09-284-220	5521	up to 60 mm	41,700
C09-284-230	5522	up to 70 mm	48,200

