

GL45 Distributor for Bottle

GL45 분배형 스크류 캡

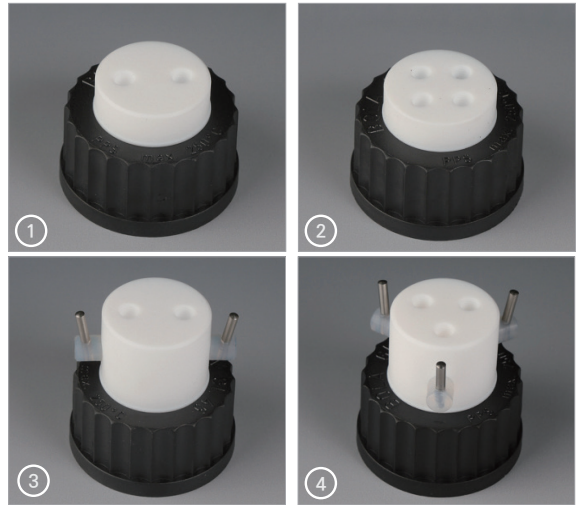
- 재질 : PTFE Body, FEP Stopcock, -50 ~ 200°C 내열
- Connection : UNF 1/4" 28G • BOLA

Without Stopcock ①, ②

Cat. No.	Model	Bore 개수	Tubing Size (id x od)	EA Price ₩
B08-460-151	F745-02	2	∅0.8 x ∅1.6 mm	118,100
B08-460-154	F745-04		∅1.6 x ∅3.2 mm	110,000
B08-460-157	F745-10	4	∅0.8 x ∅1.6 mm	141,200
B08-460-160	F745-12		∅1.6 x ∅3.2 mm	140,100

With Stopcock ③, ④

Cat. No.	Model	Bore 개수	Tubing Size (id x od)	EA Price ₩
B08-460-163	F746-02	2	∅0.8 x ∅1.6 mm	263,400
B08-460-166	F746-04		∅1.6 x ∅3.2 mm	166,000
B08-460-169	F746-10	3	∅0.8 x ∅1.6 mm	302,300
B08-460-172	F746-12		∅1.6 x ∅3.2 mm	321,100



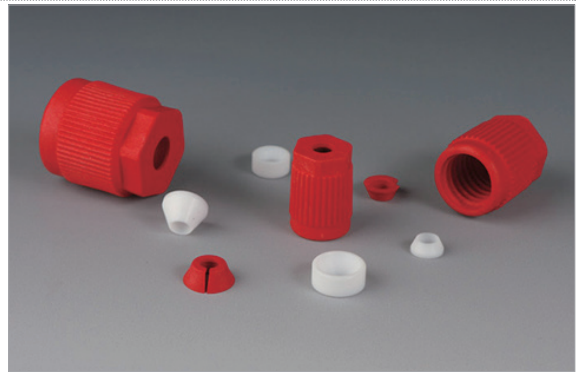
Screw Fitting for GL Screw Thread

GL Screw 나사선용 스크류 피팅

- 재질 : PTFE, ETFE, -50 °C to 150°C 내열
- 테프론 재질로 최상의 내화학성을 가짐 • Sealing Nut : PTFE
- Red Sleeve Nut : Glass-Fiber Reinforced ETFE
- Internal Parts V-ring : ETFE • O-ring : FKM, od3 mm 이하의 피팅용
- BOLA

GL14용 Screw Fitting

Cat. No.	Model	사용 Tubing od	EA Price ₩
B08-985-449	D593-02	∅0.8 mm (1/32")	83,300
B08-985-453	D593-04	∅1.0 mm	65,200
B08-985-457	D593-06	∅1.6 mm (1/16")	44,200
B08-985-461	D593-10	∅2.0 mm	46,500
B08-985-465	D593-12	∅2.4 mm	53,100
B08-985-469	D590-02	∅3.0 mm	37,300
B08-985-473	D590-08	∅3.2 mm (1/8")	38,800
B08-985-477	D590-04	∅4.0 mm	32,800
B08-985-481	D590-06	∅6.0 mm	45,400
B08-985-485	D590-62	∅6.35 mm (1/4")	58,800



GL18용 Screw Fitting

Cat. No.	Model	사용 Tubing od	EA Price ₩
B08-985-701	D593-26	∅1.6 mm (1/16")	63,000
B08-985-705	D593-30	∅2.0 mm	75,300
B08-985-709	D590-10	∅3.0 mm	36,400
B08-985-713	D590-20	∅3.2 mm (1/8")	40,600
B08-985-717	D590-12	∅4.0 mm	39,600
B08-985-721	D590-14	∅6.0 mm	41,400
B08-985-725	D590-16	∅8.0 mm	36,700
B08-985-729	D590-18	∅10.0 mm	34,500

GL25용 Screw Fitting

Cat. No.	Model	사용 Tubing od	EA Price ₩
B08-460-011	D590-22	∅3.0 mm	91,300
B08-460-015	D590-24	∅3.2 mm (1/8")	111,700
B08-460-019	D590-26	∅4.0 mm	68,300
B08-460-023	D590-28	∅6.0 mm	56,400
B08-460-027	D590-30	∅8.0 mm	54,200
B08-460-031	D590-32	∅10.0 mm	51,600
B08-460-035	D590-34	∅12.0 mm	54,700
B08-460-039	D590-36	∅14.0 mm	52,700

PTFE EX Screw Fitting for GL Screw Thread

PTFE EX GL Screw 나사선용 스크류 피팅

- 재질 : PTFE EX, PPS EX, -20 °C to 250°C 내열
- 테프론 재질로 최상의 내화학성을 가짐 • Internal Parts : PTFE EX
- Screw cap : Glass-Fibre Reinforced PPS EX
- BOLA

GL14용 Screw Fitting

Cat. No.	Model	사용 Tubing od	EA Price ₩
B08-460-221	D840-66	∅4 mm	58,900
B08-460-224	D840-74	∅6 mm	59,500



GL18용 Screw Fitting

Cat. No.	Model	사용 Tubing od	EA Price ₩
B08-460-227	D841-46	∅4 mm	80,600
B08-460-230	D841-54	∅6 mm	64,800
B08-460-233	D841-62	∅8 mm	64,200
B08-460-236	D841-74	∅10 mm	74,100

GL25용 Screw Fitting

Cat. No.	Model	사용 Tubing od	EA Price ₩
B08-460-239	D842-62	∅8 mm	117,200
B08-460-242	D842-74	∅10 mm	103,500
B08-460-245	D842-80	∅12 mm	80,000
B08-460-248	D842-90	∅14 mm	117,300