

Plastic Test Tube 플라스틱 테스트 튜브

- 재질 : PP, -10 ~ 135°C 내열, Autoclavable
- 재질 : PS, -10 ~ 80°C 내열, Non-autoclavable
- LK Labkorea

PP Test Tube, Autoclavable

Cat. No.	Model	용량	Size	PK Price ₩	
T16-660-101	PPT1260	4 ml	∅12×h60 mm	500ea	14,300
T16-660-103	PPT1278	4.5 ml	∅12×h75 mm	500ea	15,000
T16-660-105	PPT1375	5 ml	∅13×h75 mm	500ea	16,300
T16-660-107	PPT1310	7 ml	∅13×h100 mm	500ea	23,400
T16-660-109	PPT1610	10 ml	∅16×h100 mm	500ea	26,200

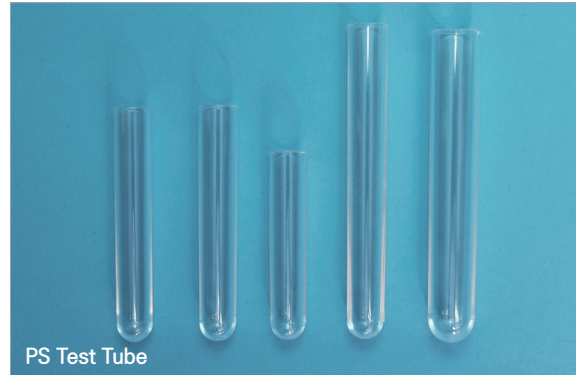
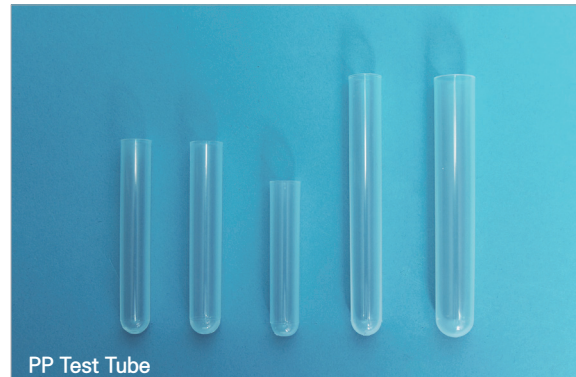
PS Test Tube, Non-autoclavable

Cat. No.	Model	용량	Size	PK Price ₩	
T16-660-111	PST1260	4 ml	∅12×h60 mm	500ea	14,200
T16-660-113	PST1278	4.5 ml	∅12×h75 mm	500ea	13,600
T16-660-115	PST1375	5 ml	∅13×h75 mm	500ea	15,400
T16-660-117	PST1310	7 ml	∅13×h100 mm	500ea	23,900
T16-660-119	PST1610	10 ml	∅16×h100 mm	500ea	29,100

PE Flange Stopper / PE 플렌지 스톱퍼

Cat. No.	Model	사용 튜브 내경	Color	PK Price ₩	
T16-660-121	PEFS012	∅12 mm	Natural	1000ea	14,200
T16-660-123	PEFS013	∅13 mm		1000ea	16,300
T16-660-125	PEFS016	∅16 mm		1000ea	22,300

- 재질 : HDPE, -100 ~ 120°C 내열, Non-autoclavable
- 색상 : Natural



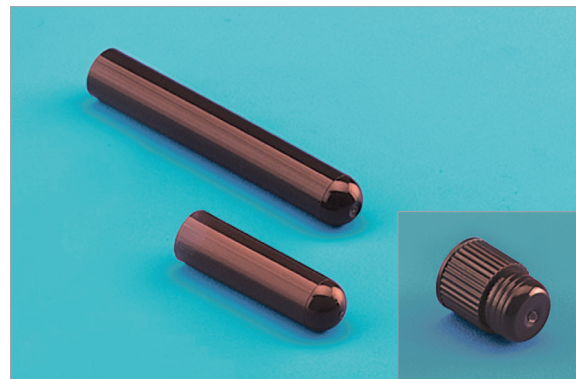
Amber Plastic Test Tube 갈색 플라스틱 테스트 튜브

Cat. No.	Model	용량	Size	PK Price ₩	
T16-46-701	T850071	3 ml	∅12×40 mm	500ea	18,100
T16-46-703	T850070	5 ml	∅12×75 mm	500ea	27,100

- 재질 : PP, -10 ~ 135°C 내열, Autoclavable
- Amber tube have 0% transmission from 270 to 600nm
- Tarsons

Optional Plug Closure

Cat. No.	Model	색상	PK Price ₩	
T16-46-751	T850001	Amber	500ea	11,700



PFA Test Tube PFA 시험관

Cat. No.	Model	용량	Size	EA Price ₩
T16-64-500	F-1116-001	5 ml	∅12×h70 mm	40,700
T16-64-507	F-1116-002	10 ml	∅12×h140 mm	45,800
T16-64-514	F-1116-003	15 ml	∅16×h110 mm	57,700
T16-64-521	F-1116-004	20 ml	∅16×h160 mm	71,300
T16-64-528	F-1116-005	25 ml	∅19×h150 mm	107,000
T16-64-535	F-1116-006	50 ml	∅22×h220 mm	154,500
T16-64-542	F-1116-007	60 ml	∅22×h230 mm	157,800

- 재질 : PFA, -196 ~ 250°C 내열, Autoclavable
- Flon Industry

