

Non-Mercury Thermometer

봉상 온도계

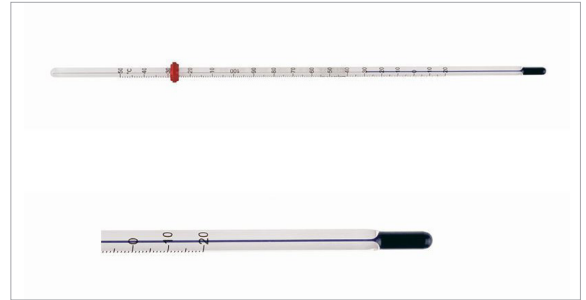
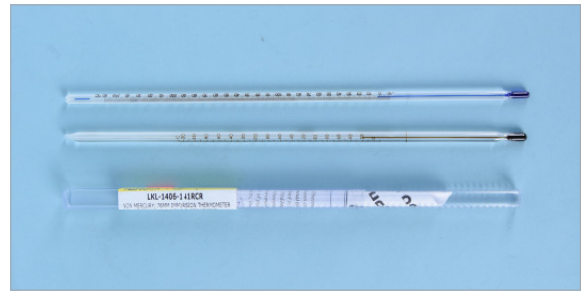
- 수은이 포함되어 있지 않은 봉상 온도계 (Mineral Spirit Filled)
- Size : od6 ~7 mm, L305mm
- 자체 보증서 포함
- Chemglass

76mm Partial Immersion / 부분담금

Cat. No	Model	온도 범위	눈금	EA Price ₩
T22-132-100	CG-3503-10	-20 ~ 110°C	1 °C	36,500
T22-132-101	CG-3503-11	-20 ~ 150°C		51,700
T22-132-103	CG-3503-12	-10 ~ 260°C		97,800
T22-132-105	1406-141RCR	-10 ~ 330°C		152,900
T22-132-109	CG-3503-L-21	-100 ~ 50°C		61,700

Total Immersion / 전체담금

Cat. No	Model	온도 범위	눈금	EA Price ₩
T22-132-112	CG-3501-01	-20 ~ 110°C	1 °C	46,000
T22-132-115	CG-3501-02	-20 ~ 150°C		48,100
T22-132-118	CG-3503-L-20	-100 ~ 50°C		70,600



Glass Thermometer

유리 막대 온도계 / 봉상 온도계

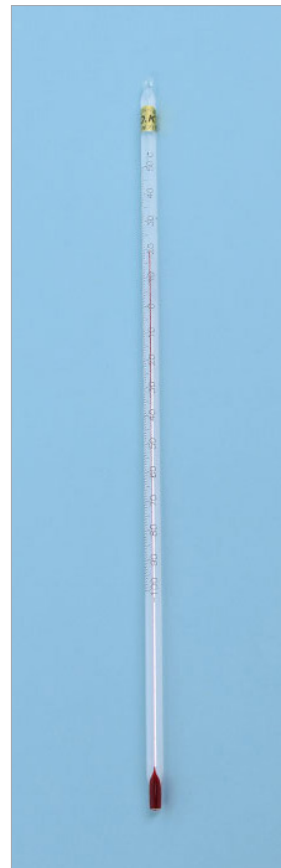
- 충전물의 종류에 따라 알콜온도계(적색)와 수은온도계(은색)로 구분
- 알콜온도계는 저온에서 수은온도계는 고온에서 정확성이 뛰어나
- LK Labkorea

알콜 온도계, Alcohol Filled Thermometer

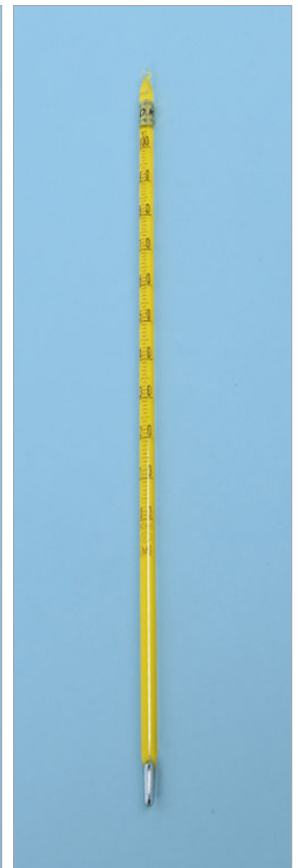
Cat. No	Model	온도 범위	길이	눈금	EA Price ₩
T22-13-118	AT-3006	-100 ~ 50°C	30 cm	1 °C	47,000
T22-13-125	AT-3012	-70 ~ 50°C			7,800
T22-13-132	AT-3018	-50 ~ 100°C			23,500
T22-13-139	AT-3024	-30 ~ 50°C			23,500
T22-13-146	AT-3030	-50 ~ 50°C			3,400
T22-13-153	AT-3036	-30 ~ 100°C			23,500
T22-13-160	AT-3042	-20 ~ 110°C			1,600
T22-13-167	AT-3048	0 ~ 150°C		2,800	
T22-13-174	AT-3054	0 ~ 200°C		2 °C	3,400
T22-13-181	AT-3060	-10 ~ 50°C		0.5 °C	2,800
T22-13-188	AT-3066	-20 ~ 50°C			3,500
T22-13-202	AT-3078	-30 ~ 150°C		1 °C	23,500
T22-13-209	AT-3084	-40 ~ 200°C		2 °C	23,500
T22-13-216	AT-3090	-10 ~ 200°C		1 °C	23,500
T22-13-223	AT-6006	0 ~ 100°C	60 cm	1 °C	28,200
T22-13-230	AT-6012	0 ~ 150°C			28,200
T22-13-237	AT-6018	0 ~ 200°C			2 °C

수은 온도계, Mercury Filled Thermometer

Cat. No	Model	온도 범위	길이	눈금	EA Price ₩
T22-13-411	MT-3007	-30 ~ 50°C	30 cm	1 °C	23,500
T22-13-418	MT-3014	0 ~ 100°C			18,800
T22-13-425	MT-3021	0 ~ 150°C			5,200
T22-13-432	MT-3028	0 ~ 200°C			5,300
T22-13-439	MT-3035	0 ~ 250°C			5,700
T22-13-446	MT-3042	0 ~ 300°C		18,800	
T22-13-453	MT-3049	0 ~ 360°C		2 °C	5,700
T22-13-460	MT-3056	0 ~ 400°C		40 cm	70,500
T22-13-467	MT-3063	0 ~ 500°C		45 cm	39,200
T22-13-474	MT-3070	-5 ~ 50°C		30 cm	0.5 °C
T22-13-481	MT-3077	-30 ~ 100°C	23,500		
T22-13-488	MT-6007	0 ~ 100°C	60 cm	1 °C	28,200
T22-13-495	MT-6014	0 ~ 150°C			28,200
T22-13-502	MT-6021	0 ~ 200°C		2 °C	28,200
T22-13-516	MT-6035	0 ~ 300°C			28,200



알콜 온도계



수은 온도계