

The background of the entire page is a close-up of a woman's face. Her eyes are a striking blue, and her lips are a soft pink. Overlaid on her face are various digital and data-like elements: a grid pattern, binary code (0s and 1s), and some abstract shapes. The overall aesthetic is high-tech and futuristic.

**IKA®**

labworldsoft® 5



**designed**  
to work perfectly

# labworldsoft® 5 | Ease your lab life!

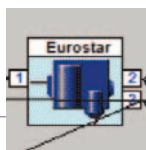
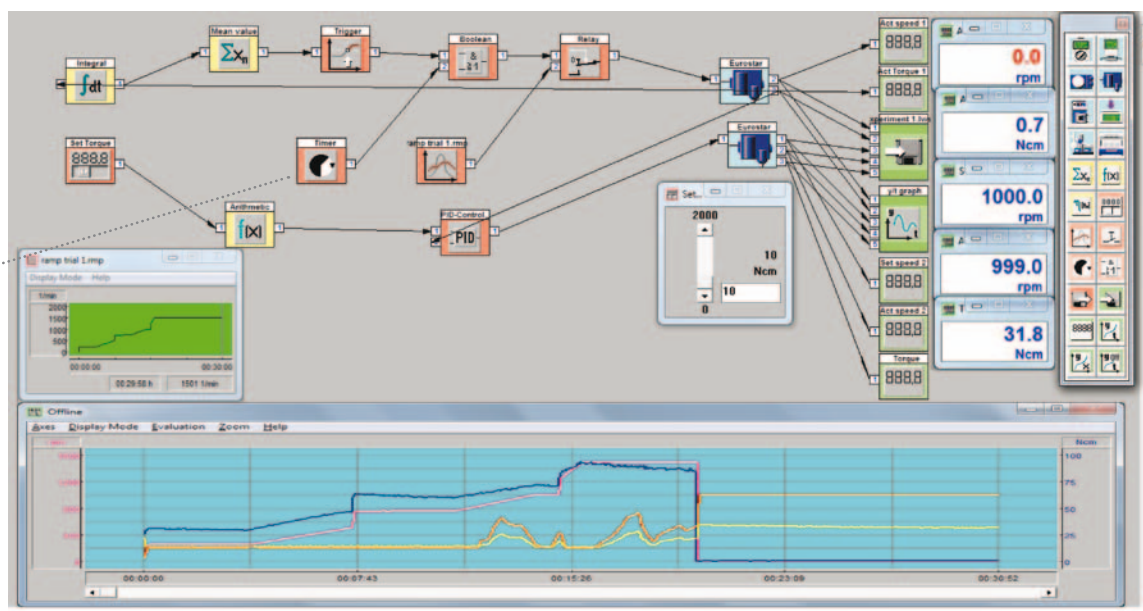
## Advanced software with an innovative visual approach to lab automation

labworldsoft® is a multi-purpose software program for measuring, controlling and regulating laboratory devices. It can network up to 64 devices simultaneously via one PC, thus making the automation of your laboratory experiments and processes much more easy and efficient.

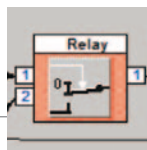


GLP/GMP Compliance!

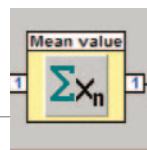
Ident. No. 0002970000



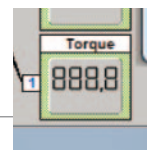
Blue modules represent laboratory devices that are physically present (hardware)



Red modules are used for manual and automatic control of devices



Yellow modules are used for arithmetic operations and to derive average values



Green modules are used for numeric or graphic display of measured values





**IKA®+**

**Floating license!**

Cost effective licensing for  
high-value applications!  
To get the floating license,  
please write to us at:

**[sales@ika.de](mailto:sales@ika.de)**

labworldsoft® is a highly innovative and versatile software program that offers a flexible platform. It not only integrates IKA® laboratory devices but also supports devices from other manufacturers as well, ensuring reduced processing times and increased productivity.

# Fast, flexible and easy networking!



labworldsoft® allows for the fast recording and controlling of many physical parameters, such as torque, temperature, speed, etc. They can be represented on a y/t graph for easier analysis and documentation.

**IKA®+**

**Try it for yourself!**

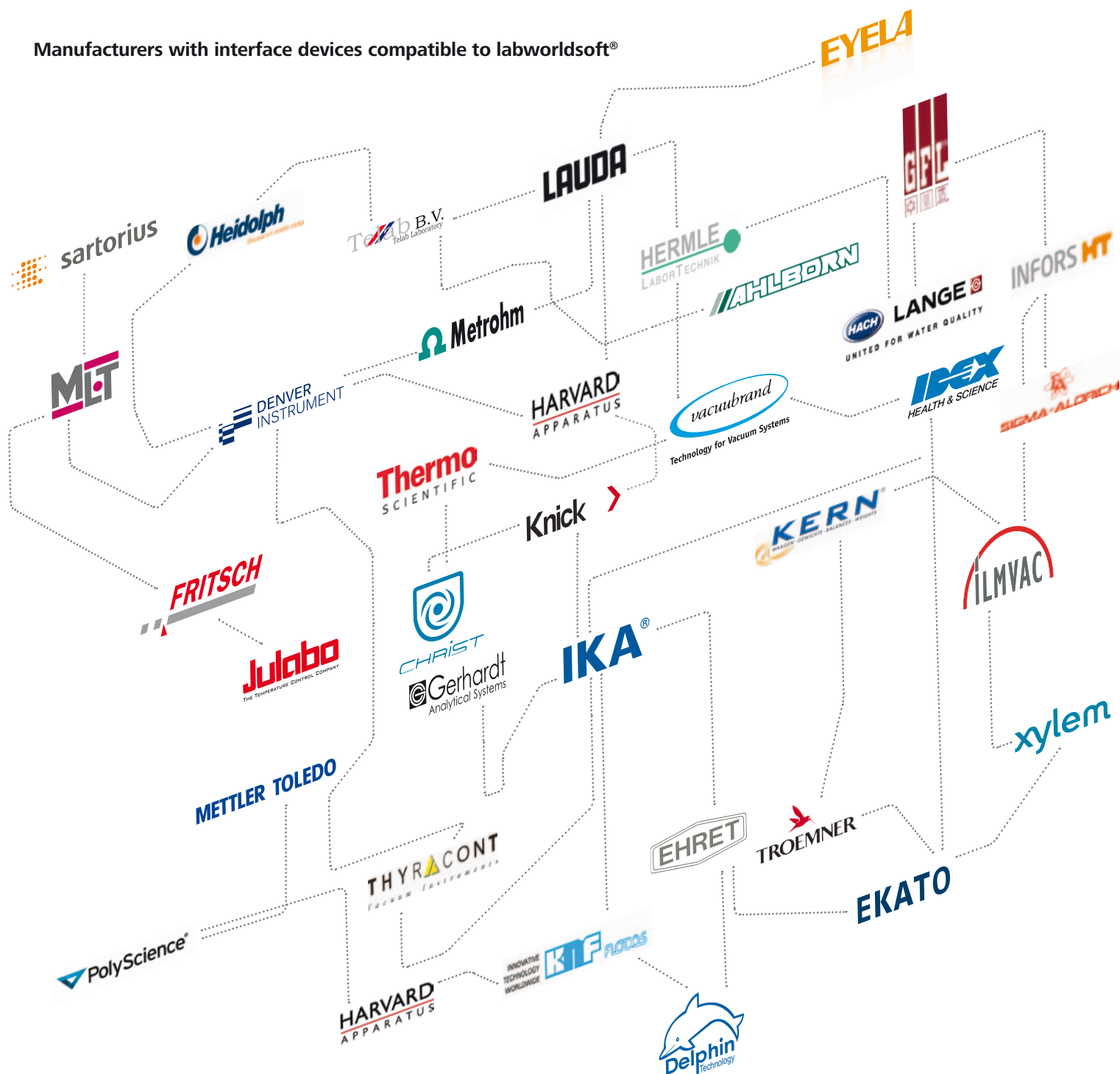
Get your free, fully functional,  
30-day trial version  
Download at:

**[www.ika.com](http://www.ika.com)**

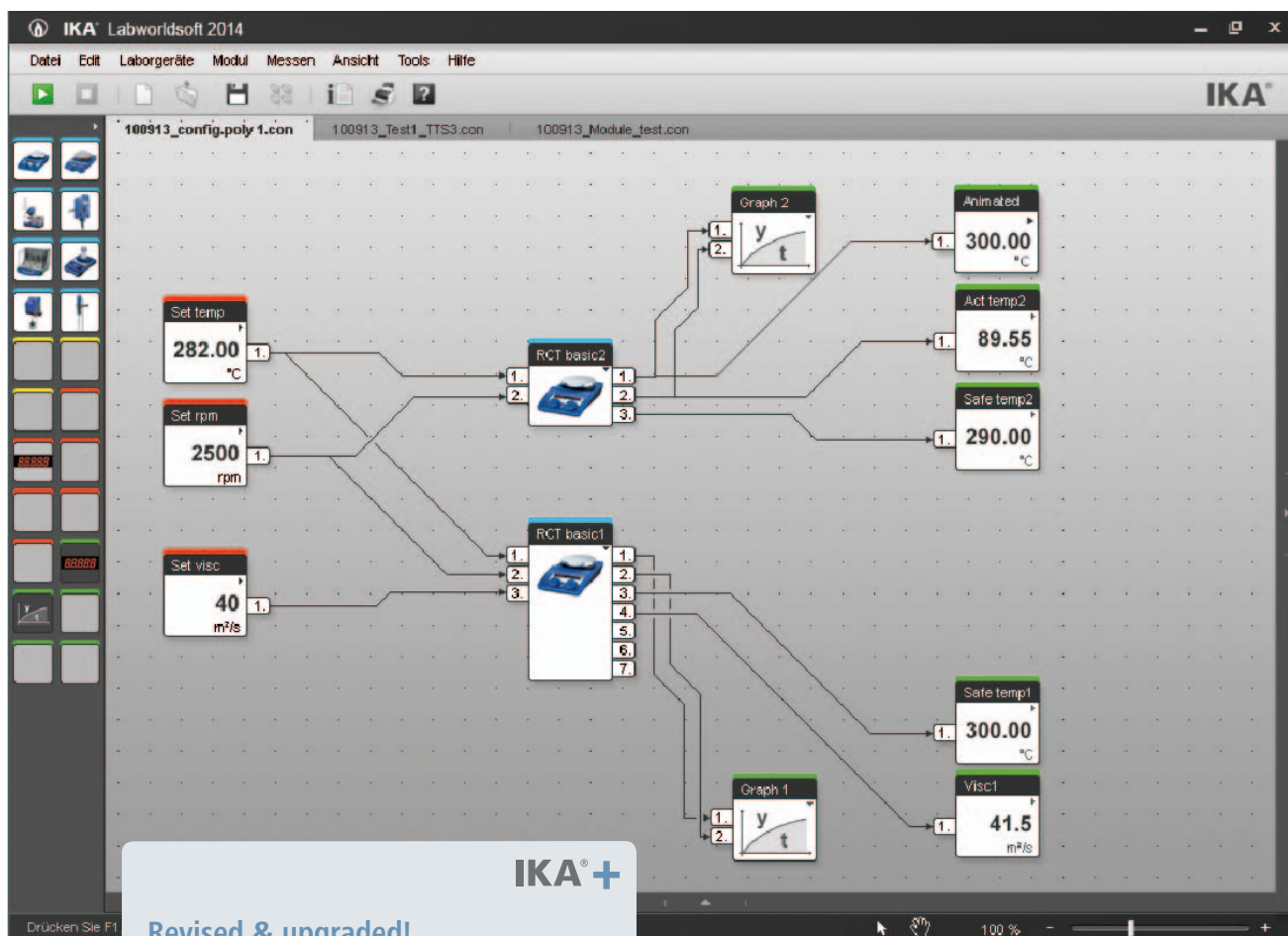




Manufacturers with interface devices compatible to labworldsoft®



# labworldsoft® 2014 | The future of laboratory automation



## Revised & upgraded! Lab automation solutions with a completely revamped engine

- > FDA 21 CFR part 11 compliance
- > Enhanced device support
- > Ergonomic and enhanced graphics
- > Multi-lingual with 10 additional languages
- > Secure & tamper-proof lab measurements (GLP/GMP)

This software version offers you the most advanced laboratory automation solutions. Its enhanced design and technology simplifies the laboratory process, thus increasing productivity

Available  
2014

## FAQ

### **What are the system parameters (for a PC) required to work with labworldsoft®?**

Pentium 90 with at least 16 MB RAM, 8 MB free hard disc memory, VGA-Display: monochrome with at least 16 levels of gray or colour, Windows 95/98/2000/NT/ME/XP/7 com ports can be upgraded for special needs.

### **Can the results of a measurement be printed with labworldsoft® while the test is still running?**

No, an Offline-File has to be created from the saved data after the test. Only with this file, it is possible to print.

### **Is it possible to start labworldsoft® (LWS) only with administrator rights?**

No, every user can start LWS, but for installing LWS administrator rights are necessary.

**IKA®+**

### **Application Support!**

For questions regarding applications and processes, you can call our hotline number:  
**00 8000 4522777 (00 8000 IKAAPPS)\***  
E-Mail: [applicationsupport@ika.de](mailto:applicationsupport@ika.de)

\* Monday – Thursday from 8:30 - 16:30  
Friday from 8:30 - 15:30





Prices valid until 31st of December 2013

All prices exclusive to VAT

Subject to alteration of prices

Subject to technical changes

Indications not binding for delivery



#### Remain up-to-date!

Get absolutely free software updates and technical support by getting yourself a one year service contract.

[www.ika.com](http://www.ika.com)

201302\_Labworldsoft\_brochure\_EN

#### IKA®-Werke GmbH & Co. KG

Janke & Kunkel-Str. 10

79219 Staufen

Germany

Tel. +49 7633 831-0

Fax +49 7633 831-98

[sales@ika.de](mailto:sales@ika.de)

[www.ika.com](http://www.ika.com)



[www.facebook.com/IKAworlwide](https://www.facebook.com/IKAworlwide)